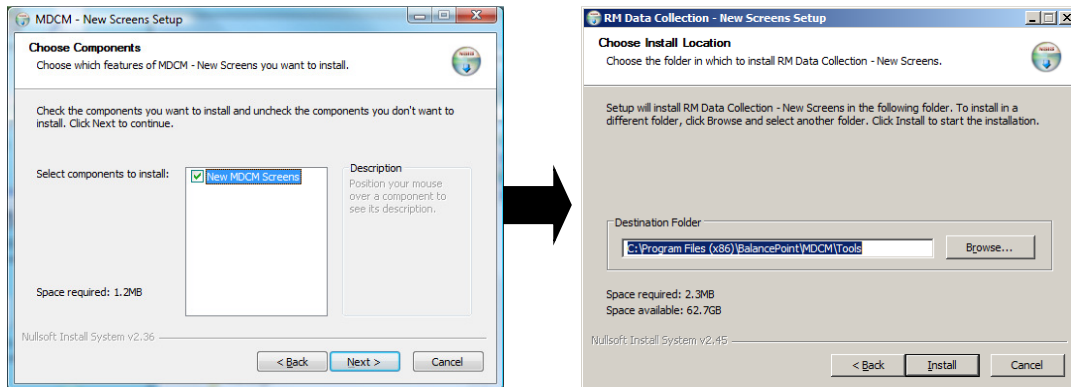


Adding Screens to MAX Data Collection Monitor

Adding new sceens:

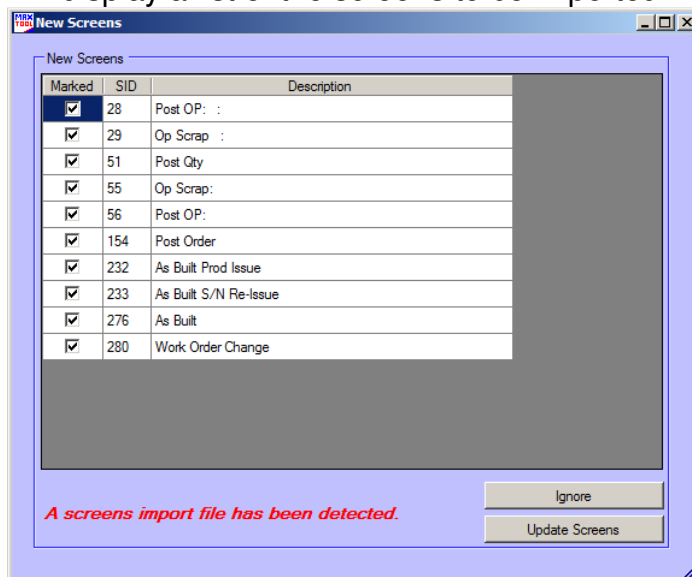
MDCM loads all of the active screens when it starts up from the CUSTOM_BPT_MDCM_SCREENs table in MAX. New screens will be imported into the database as follows:

- 1) Run NewMDCMScreens.exe - select the same location of the Tools application folder which is by default: c:\Program Files(x86)\BalancePoint\MDCM\Tools



This will save a file called MDCMScreens.XML.

- 2) Start MDCTools which will look in the directory for MDCMScreens.XML and if found will display a list of the screens to be imported:



- 3) Select all or some of the screens and click "Update Screens" to import or update the selected screens or click ignore to proceed with importing.
- 4) The MDCMScreens.XML will be moved to a \Processed folder once it has been imported.
- 5) Add and necessary navigation links and security rights to access the new screens.
- 6) Start or refresh MDCM.